

# MONTHLY MEMBERSHIP PROGRESS REPORT

LOCATION NEW ZEALAND

District 202 M

Results as of: 10/31/2022

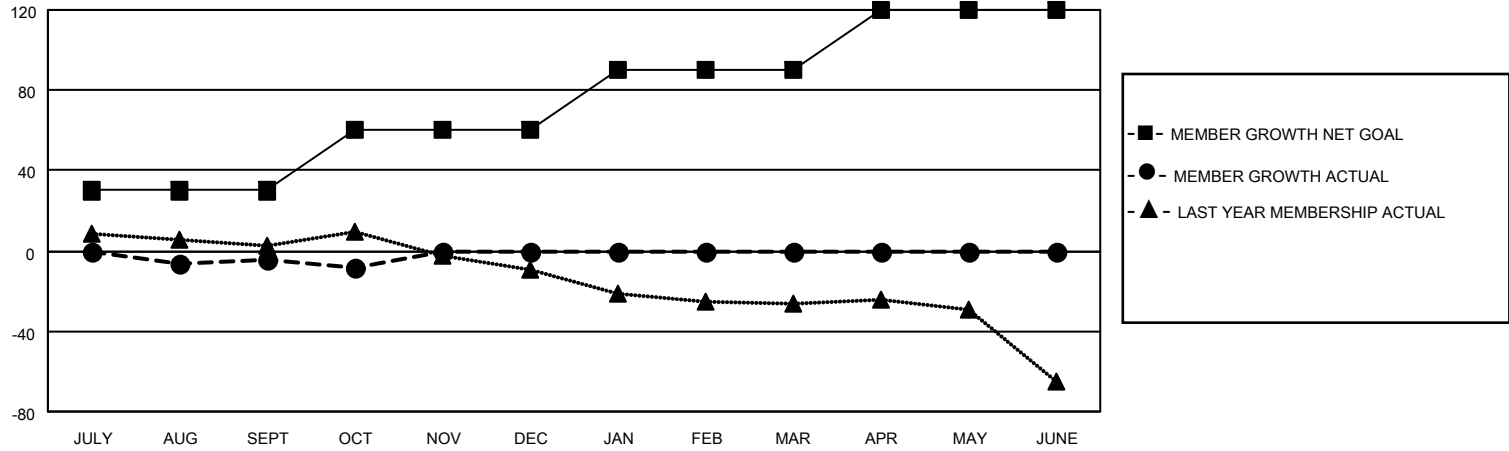
Clubs			
RESULTS FOR 2022-2023			
QUARTER	NEW CLUB GOAL	NEW CLUBS	DROPPED CLUBS
JULY/AUG/SEPT	0	0	2
OCT/NOV/DEC	0	0	0
JAN/FEB/MAR	0	0	0
APR/MAY/JUNE	0	0	0

Members			
RESULTS FOR 2022-2023			
QUARTER	MEMBER GROWTH NET GOAL	MEMBER GROWTH ACTUAL	DROPPED MEMBERS ACTUAL (including transfers)
JULY/AUG/SEPT	30	19	12
OCT/NOV/DEC	30	6	8
JAN/FEB/MAR	30	0	0
APR/MAY/JUNE	30	0	0

**GOALS AND ACTUAL NEW CLUBS CUMULATIVE**



**GOALS AND ACTUAL MEMBERS CUMULATIVE**



<b>DROPPED CLUBS: 2</b>	
<b>DROPPED MEMBERS</b>	
DECEASED	5
CLUB CANCELLED	0
OTHER	17
<b>TOTAL</b>	<b>22</b>

13 CLUBS OF 41 ADDED 1 OR MORE NEW MEMBERS

[CLICK HERE FOR CUMULATIVE MEMBERSHIP DATA](#)

<u>GENDER DISTRIBUTION</u>	
MALE	569 (61.65%)
FEMALE	354 (38.35%)
NON BINARY	0 (0.00%)
PREFER NOT TO ANSWER	0 (0.00%)
<b>TOTAL FAMILY UNIT MEMBERS</b>	<b>80</b>
<b>FAMILY MEMBERS PAYING HALF DUES</b>	<b>40</b>